

FiWaGuard EXTINGUISHING SYSTEMS

FiWaGuard products are manufactured by FiWaRec Germany. A general characteristic of the FiWaGuard product range is represented by the FiWaGuard valves & sensor tubes.

FiWaGuard systems may be totally self-contained, and not require any type of outside electrical source and will remain totally operational during unexpected power outages.

These systems do not necessarily require an expensive control panel and are the most cost effective automatic fire suppression systems available.

A simple design and application can normally be installed in a few hours, significantly reducing expensive labor costs.

The reliable sensor tubes that virtually eliminates false discharges and subsequent down time costs and expense. The flexible sensor tubes can provide protection in difficult and hard to reach areas where other detection methods cannot be used. High temperature sensor tubes are available to be used in harsh & high temperature environments and in where other types of detection would quickly deteriorate and render the system inoperable.

The purpose of FiWaGuard extinguishing systems is to detect a developing fire, to extinguish and to prevent the fire spread to the immediate surroundings. These extinguishing systems are used in several areas, for example:

INDUSTRIAL EQUIPMENT

Forklifts, plant machinery engine protection; paper pulping machines; farming equipment.

FUME CABINETS

Chemical storage; research and development labs; chemical production; pharmaceutical labs; university and school labs.

ON-ROAD VEHICLES / MASS TRANSIT

Buses; electric trains; school buses; par transport vehicles; emergency vehicles; shredder trucks and racing cars.

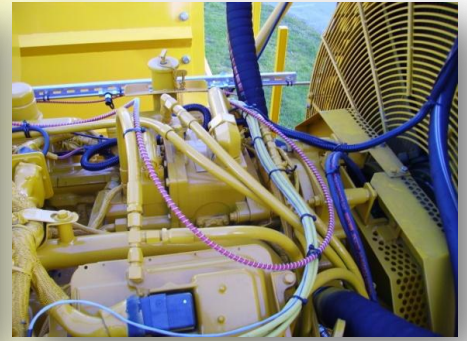
ELECTRICAL CABINETS AND CONTROLS

Computer racks; PLC & process automation control cabinets; critical data processing equipment; UPS cabinets; medical equipment; switchgears.

CNC MACHINES

Enclosed automated milling machines; EDM machines; robotic welding machines; plastic injection molding machines.





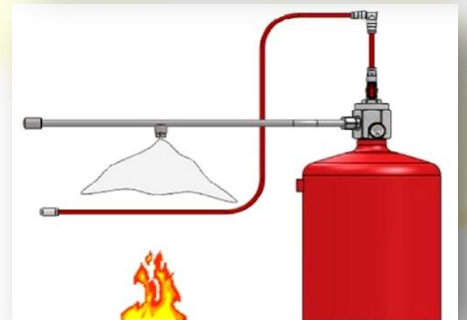
DIRECT LOW PRESSURE SYSTEMS

The DLP System utilizes fire detection and activation of the fire extinguishing system via a pneumatic sensor tube which is flexibly installed in the danger area as an integral component of the extinguishing system. The sensor tubes are pressurized and placed within the enclosed area above potential fire hazards. In the event of a fire, the sensor tube bursts at its warmest point which leads the extinguishing agent inside the cylinder through the sensor tube to extinguish the fire at source.



INDIRECT LOW PRESSURE SYSTEMS

The ILP System utilizes fire detection via pneumatic sensor tube/electric conventional detectors. Once the sensor tube bursts/control panel indicates fire the valve will discharge the suppressant agent through copper tubing, stainless steel tubing or braided hose and strategically placed nozzles within the protected enclosure.



COMPATIBLE AGENTS:

FiWaGuard extinguishing systems are compatible with most commercially available fire suppression agents, including:

FM200®
HFC-125

Halotron I®
Foam

HFC-23
Dry Chemical (ABC, BC, D)

HFC-236ea
CO2